

N.W. 1/4
SECTION 28, T.6N., R.2W., S.L.B. & M.

IN WEBER COUNTY
SCALE 1" = 200'

TAXING UNIT: 53,377

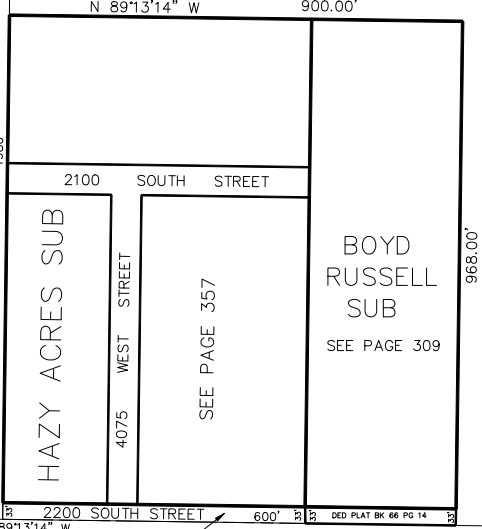
SEE PAGE 57

BOB ROPELATO & WF PATRICIA
{150780044}
33,930 SQ FT (EX RD)
TU: 53

LYNETTE GILBERT 1/3
DONALD ALLEN GILBERT 2/3
GILBERT 150773
TU: 53 1.00 AC±
290.33'
150'
150'
125.00'
170.0'
186.72'
245.45'
180.0'
150.0'
290.0'
290.0'
150.0'
74.33'
BOBBY MATHEW ROPELATO ETAL
{150780037}
30,600 SQ FT
TU: 53

A JAY SMITH = 4.21% ETAL
150780110
55.69 AC±
TU: 53

A JAY SMITH = 4.21% ETAL
150780035
57.7 AC±
TU: 53



2200 SOUTH STREET
WEBER COUNTY
(150780112)
19,800 SQ FT
TU: 53

SEE PAGE 78-3

SEE PAGE 80

SEE PAGE 78-1